

RIPLEY CRICKET CLUB



**Moving to a new
ground in 1993**

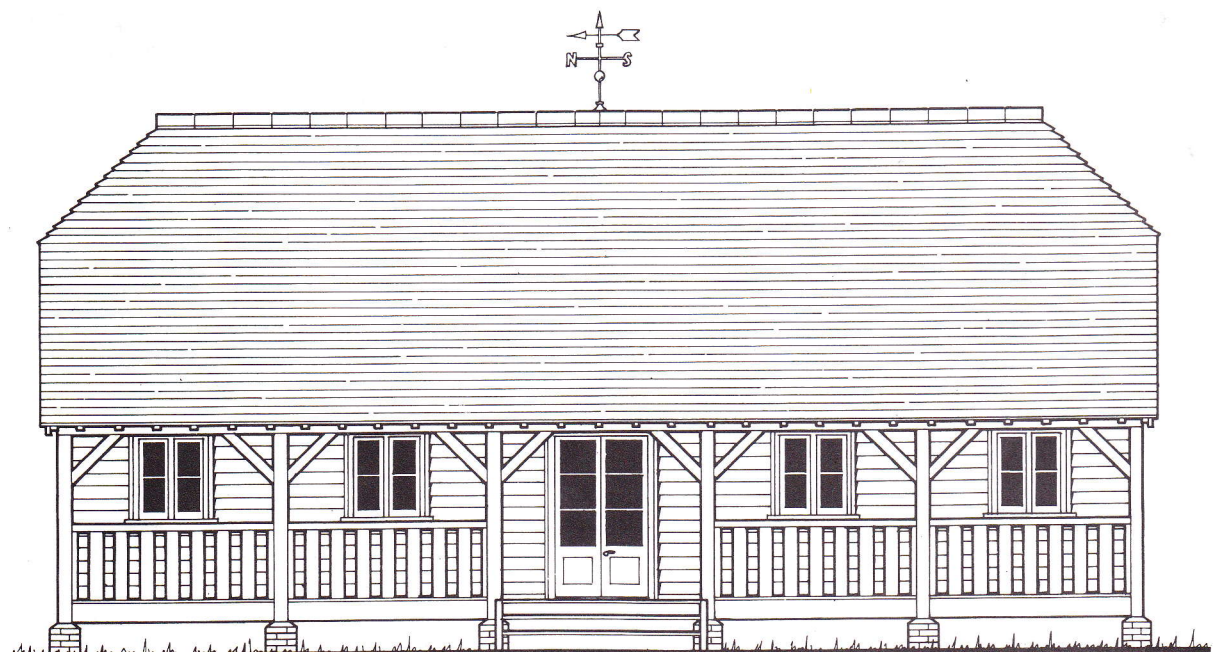


Existing ground and pavillion

Ripley Cricket Club is moving to a new ground in 1993. Its present ground is separated from the village of Ripley by the busy A61 connecting Harrogate to Ripon and the A1. Apart from the lack of integration with the local community caused by the road, the ground itself is not one of the better playing surfaces in the local league, and has very limited facilities — no electricity, a poor water supply and antiquated changing rooms.

Ripley village stands at the entrance to Nidderdale. Its historic castle has been the home of the Ingilby family since the 13th century and the present baronet, Sir Thomas, takes a keen interest in cricket and in the attractions of the village. A new cricket ground is being prepared adjacent to the village, with fine views of both the castle and up into Nidderdale. There are plans to build a new pavilion, in keeping with the nature of the place and work has already started to make the field fit for cricket.

The new pavilion will be constructed of wood, with a pantiled roof and a verandah running the full length of the building. On the field itself the soil consistency has been improved in so far as the wicket is concerned by the addition of several tons of mud from the River Nidd. The intention is to give the soil improved consistency and so encourage grass to root deeper and bind the surface together effectively. Eventually the Club aims to have a playing surface of the highest quality.



Proposed new pavillion



Site of new ground overlooked by Ripley Castle



The busy A61

The Club already has close links with the village. Sir Thomas Ingilby, who used to play with the side when in his teens, is President. The local school uses the cricket field as a sports area for the pupils. And the former village blacksmith performs miracles annually in keeping the Club's antiquated motor roller in working order. The newly opened Boar's Head Hotel and pub provides our off the field base after home games.

In moving to the new ground, we hope to see a Club which has facilities and a field to attract top class cricket — the immediate aim is to attract representative games for the Nidderdale League. More than that, however, we aim to integrate the Club much more closely into the village, with the provision of a children's play area, property facilities for spectators, and ultimately, a bowling green.

However, Ripley Cricket Club is a small club by any standards. Playing members number only 17 to 20, with a small number of young sons, elderly fathers-in-law and so on, who can be pressed into service in an emergency. Resources are few and the costs of moving to the new ground will undoubtedly tax our skills in fund raising.

The nature of this venture is unique in the history of the Club, although one faced by many sporting clubs in their natural life cycles. We have a plumber, an accountant, an estate agent, a gardener and a computing manager amongst our number. Theirs, and other skills will be taxed to make the enterprise succeed.

Sir Thomas has generously offered to help in the shape of facilities at the castle, to hold large scale social events — dinners or family Sunday lunches — to help raise funds. We look forward to tackling these opportunities. We expect that the experience will be fascinating, challenging and above all different. It should change the nature of our Club, and our relationship one with another. The next 12 to 18 months will see the rebirth of Ripley — one way or another.

Ripley Cricket Club is looking for support of all kinds in its new venture. Sponsorships, donations and help from the local community is urgently needed to set the Club on its new path.

WILL YOU HELP US?

Chairman: Dennis Woolley
Scotton Grange West
Mire Syke Lane
Scotton, Nr. Knaresborough
North Yorkshire
HG5 9HW
Tel. 0423-865755